



ACCEPTANCE OF ENTRY SUPPLEMENTARY REGULATIONS - PART TWO COMPETITOR INFORMATION RALLY BAY OF PLENTY 2023

1.0 JURISDICTION:

This event is a National(with Foreign Participation)/Clubmans Rally, promoted by MotorSport Bay of Plenty and will take place on 14/15 October 2023 in the Whakatane/Western BOP area.

The Rally will be held under these Supplementary Regulations, the MotorSport NZ National Sporting Code and its Appendices and Schedules particularly Appendix Three, Schedule R being the Standing Regulations for all Rallies and Appendix Two, Schedule A – Driver and Vehicle Safety Requirements.

The MotorSport NZ Permit Numbers are: 231496 National Rally
231529 Clubmans Rally

2.0 MAJOR OFFICIALS

Clerk of the Course	David Loughlin
Deputy Clerk of the Course	Roger Bailey
Assistant Clerks of Course	Lara Herbert, Steve Phipps, Steve Foster Ross Twyman, Andrew Shrimpton, Donald Welch, Joanne Kapua
Secretary of Event	Linda Loughlin
Chief Scrutineer	James West
Chief Marshal/Safety Officer	Andy Adams
Assistant Safety Officer	Lisa Adams
Accident Investigator	Andrew Shrimpton
Competition Relations Officer(s)	Bruce McKenzie Andrew Greville
Service Park Managers	Joanne Kapua Neil Rogers
Stewards	Chairman – Mark Mclean Member – Joelle Eyre Member – Will Orr
NZRC Championship Scrutineers	Greg Dietschin, Devan Gregory
Technical Judges	
Noise Judge	Chief Scrutineer
Starting Judge	Any Start Line Marshall COC using Rallysafe
Competitor Relations Officers	Bruce McKenzie, Andrew Greville
Rallysafe	Graham Buchanan
Organising Committee – Chairman/Members	David Loughlin, Roger Bailey, Dianne Follows, Neil Rogers, Mike Torr, Andrew Shrimpton, Andy Adams, Linda Loughlin, Matt Hayward, Joanne Kapua
Contact details for all matters pertaining to the event are as follows:	
Rally Bay of Plenty Inc	Email: rally@mbop.org.nz
	Web: www.mbop.org.nz
	Ph: 021 644 177

OFFICIALS IDENTIFICATION

Officials of the event will be identified as detailed below.

- (a) Marshals – Yellow Vest
- (b) Stage Control (Post) Chief – Orange Vest
- (c) Scrutineers – Orange Vest
- (d) Other Officials – Yellow Vest
- (e) Competitor relations officers – Orange vest

3.0 THE EVENT

3.1 Venue: The event will run on public and forestry roads in the Whakatane and Western Bay areas of the Bay of Plenty, with Service Parks at the Pukehina School and Matata. There are two supplementary refuel opportunities. There will be 12 Special Stages. SS10 is the Power Stage.

3.2 Length: Comprises approximately 130km of special stages and 318km of touring. Stage descriptions are attached.

3.3 Venues:

Rally Headquarters	P.F. Automotive 7/95 Birch Avenue. Tauranga
Documentation	Friday 13/10/2023 for those competitors undertaking reconnaissance Rally Headquarters Saturday 14/10/2023 All other competitors Orange Motor Co, 13-17 Gateway Drive, Whakatane
Scrutineering and Technical Checks	Saturday 14/10/2023 Orange Automotive, 17 Gateway Drive, Whakatane
Rally Show/ Ceremonial Start	Saturday 14/10/2023 Kakahoroa Drive Carpark, Whakatane
Rally Start	Sunday 15/10/2023 Kakahoroa Drive carpark, Whakatane
Rally Finish	Blake Park Carpark, Maunganui Rd, Mt Maunganui

4.0 EVENT PROGRAMME

Monday 9 October 2023

Close of Entries 2400 hours

Tuesday 10 October 2023

Acceptance of Entry advised by email together with seeded entry list

Monday 9 October 2023

Close of Late Entries 2359 hours

Friday 13 October 2023

1600-1730 Documentation available for those undertaking reconnaissance. Rally HQ, PF Automotive, 95 Birch Ave, Judea, Tauranga.

1900 Reconnaissance Briefing at the Vintage Car Club Rooms, 29 Cliff Road, Tauranga

Saturday 14 October 2023

0700-1500	Single pass reconnaissance of stages starting from Tauranga and ending in Whakatane.
1200-1400	Documentation available for those not undertaking reconnaissance. Venue Orange Motor Company, 15 Gateway Drive, Coastlands, Whakatane
1200-1500	Scrutineering and Technical Checks at Orange Motor Company, 15 Gateway Drive, Whakatane
1530-1800	Motorshow, Kakahoroa Carpark, off Kakahoroa Drive, Whakatane
1700	Ceremonial Start, Kakahoroa Carpark
1830	Novice Briefing at Orange Motor Company, 15 Gateway Drive, Whakatane

Sunday 15 October 2023

0540	First Car departs Kakahoroa Carpark, Whakatane
0900	Clubman competitors to report to Service Park 1, Matata Rugby Club Grounds. See instructions attached.
1608	First Car arrives at Blake Park Carpark, Mt Maunganui
1740	Provisional Classification published
1745	NZRC Post Event Scrutineering at Auto Electrics Western Bay, 15 Aerodrome Rd, Mt Maunganui
1830	Final Classification published.
1900	Prizegiving Venue Opens – Baypark, Mt Maunganui
2000	Prizegiving Commences

5.0 SAFETY AUDIT

Competitors are encouraged to arrange with one of the scrutineers listed in Supp. Regs Part 1 to perform a scrutineering safety audit within the two weeks prior to the event. Should you have another suitable scrutineer in your area please ask them to contact the organisers for authorisation to carry out inspections. Inspections must be carried out between 1-13 October 2023. A limited capacity for scrutineering will be available on Saturday 14 October at Orange Motor Co as above. Please advise by email if you cannot arrange pre-event scrutiny. Note that your safety clothing (including helmet) is one of the items to be checked.

Cars will not be cleared to start until all numbers and advertising material is firmly affixed in the appropriate places on the competing car.

RallySafe units will be available at Documentation on Friday 13 October at Rally HQ in Tauranga and Saturday 14 October in Whakatane. These must be fitted for checking at the Rally Show.

For cars that are not due for audit, we remind you – you have signed a declaration confirming that your vehicle meets all the requirements of Schedule A, including Rally Vehicle additional requirements. Please ensure that you have checked your vehicle and that it does meet the regulations. This is YOUR responsibility.

6.0 OFFICIAL BULLETINS

Official Bulletins may be issued in accordance with the provisions of the National Sporting Code.

7. OFFICIAL NOTICE BOARDS

These will be at any of the following venues:

- Outside Secretaries office at Documentation
- Rally Headquarters
- Online at www.chrissport.co.nz or www.mbop.org.nz/events/rally-bay-of-plenty1

8. RESULTS

Running results will be posted online at www.chrissport.co.nz throughout the day. Provisional results will be posted at approximately 1630 online at www.chrissport.co.nz.

9. TIME CARDS

The event will be Method 2 as per Schedule R, Article 12.5 (2). This means that the crew in the car will be responsible for completing their own time card from the in-car rallysafe unit. All competitors should make themselves familiar with how to extract the information from the rallysafe unit. See the Rallysafe website [Competitors T&M – RallySafe](http://www.rallysafe.co.nz) and from here download the manual. Instructions for retrieving times are on page 18. A sample time card is attached for your information.

10. STAGE NOTES

10.1 The use of Stage Notes has been permitted in accordance with Schedule R Part 1, Article 8.

9.2 One pass reconnaissance is available on Saturday 14 October, for those competitors who have purchased Stage Notes and paid the Recce Fee of \$50. The reconnaissance schedule is appended and will start at 0700 at Paengaroa.

Reconnaissance will be conducted in convoy strictly in accordance with the published schedule. The reconnaissance will start from Tauranga, and finish in Whakatane.

No late entry into a stage for reconnaissance will be permitted. During special stages, crews must remain within the convoy.

At all times competitors maximum speed on Special Stages will be 80kph.

All cars must have their headlights on at all times whilst travelling on the roads of the special stages. All cars must carry a Fire Extinguisher. Crews will not be permitted into the forest stage without a fire extinguisher onboard.

Crews are only permitted to enter a special stage from the start point shown in the Road Book and may not under any circumstance drive in a direction opposite to that of the rally unless instructed by an official of the event.

Crews must stop at the start of each stage where a Rally Official will endorse their reconnaissance card and at any other location where instructed.

Competitors shall create their own safety plan which appoints a team member who shall be responsible for the wellbeing of the crew during the reconnaissance period.

Each crew using a reconnaissance car will be issued with 3x Number Sets. The two large sets of numbers must be placed on the rear side windows of the reconnaissance vehicle. The small numbers must be placed on the front windscreen in the top corner on the co-driver's side. Each crew will be issued with a reconnaissance card valid for each special stage according to the reconnaissance time schedule.

All recce vehicles must carry a fire extinguisher – min 2kg powder or 2.4L foam

11. GENERAL

11.1. Promotional Requirements, Ceremonial Start

The ceremonial start will be held in the Kakahoroa Carpark, off Kakahoroa Drive, Whakatane on Saturday October 14. Crews are instructed to enter the carpark from as per the attached map.

All competing crews are required to attend for promotional purposes. Crews must be present with their cars and wearing team apparel by 1600. The Ceremonial Start will commence at 1700.

11.2. Change of Codriver:

Change of Co-Driver is permitted at any Service; the replacement Co-Driver must have completed all Documentation and Scrutineering requirements. Competitors wishing to take this option are to advise the Clerk of the Course via a CRO at the Service Park at least 15mins before leaving service.

Competitors wishing to make this change are advised as per the current MSNZ Manual the crew undertaking the change cannot feature in the results.

11.3. Official Time

Official time throughout the entire rally will be set from Rallysafe.

11.4 Withdrawals and Re-joining

All withdrawals either temporary or permanent must be reported to Rally Control as soon as possible. Competitors who have handed in a temporary withdrawal form or have phoned a temporary withdrawal to Rally Headquarters, have the opportunity to re-join the rally after service. Competitors wishing to re-join must advise the CRO before their scheduled report time to the TC after service. If the vehicle has been damaged the competitor needs to ensure it is rechecked by a Scrutineer prior to re-joining or departing the event. Re-joining competitors will be reseeded at the discretion of the Clerk of the Course.

As per the NZRC Championship Portfolio registered competitors are able to re-join at the Power Stage. The Power Stage is SS10 TMMI.

11.5 Servicing

There will be two service parks throughout the event. One at the Rugby Club grounds at Matata and one at Pukehina School. Competitors must service on a ground sheet capable of holding the debris and mud that falls from the vehicle during servicing and ensure that all rubbish is removed when leaving the service park. Additionally, both service areas are on grass and competitors and service crews must drive into and around the service park in a manner that ensures there is no damage to the surfaces. A penalty may be incurred if a competitor or service crew is observed causing damage.

Both service parks offer toilets within their respective facilities. Competitors and crews are requested to take care of these facilities when using them.

Service Park information will be distributed with your competitor packs. Competitors who wish to share service crews, or with large trucks and service vehicles, are requested to make an application to rally@mbop.org.nz, with details and dimensions of the extra space required. This application is to be made at the time of entry.

11.6 Remote Refuel

There will be two opportunities for remote refuel, located prior to SS 2 on SH30 and at the TECT Park. Details will be in the road book. Competitors are reminded to ensure that they are familiar with and abide by the MotorSport NZ Code of Practice – Fuel Handling. This can be found at <https://www.motorsport.org.nz/technical/fuel/>.

11.7 Prizegiving

The Event Podiums will be held as soon as practicable after all required cars have arrived at the final time control. The venue is Blake Park, Mt Maunganui.

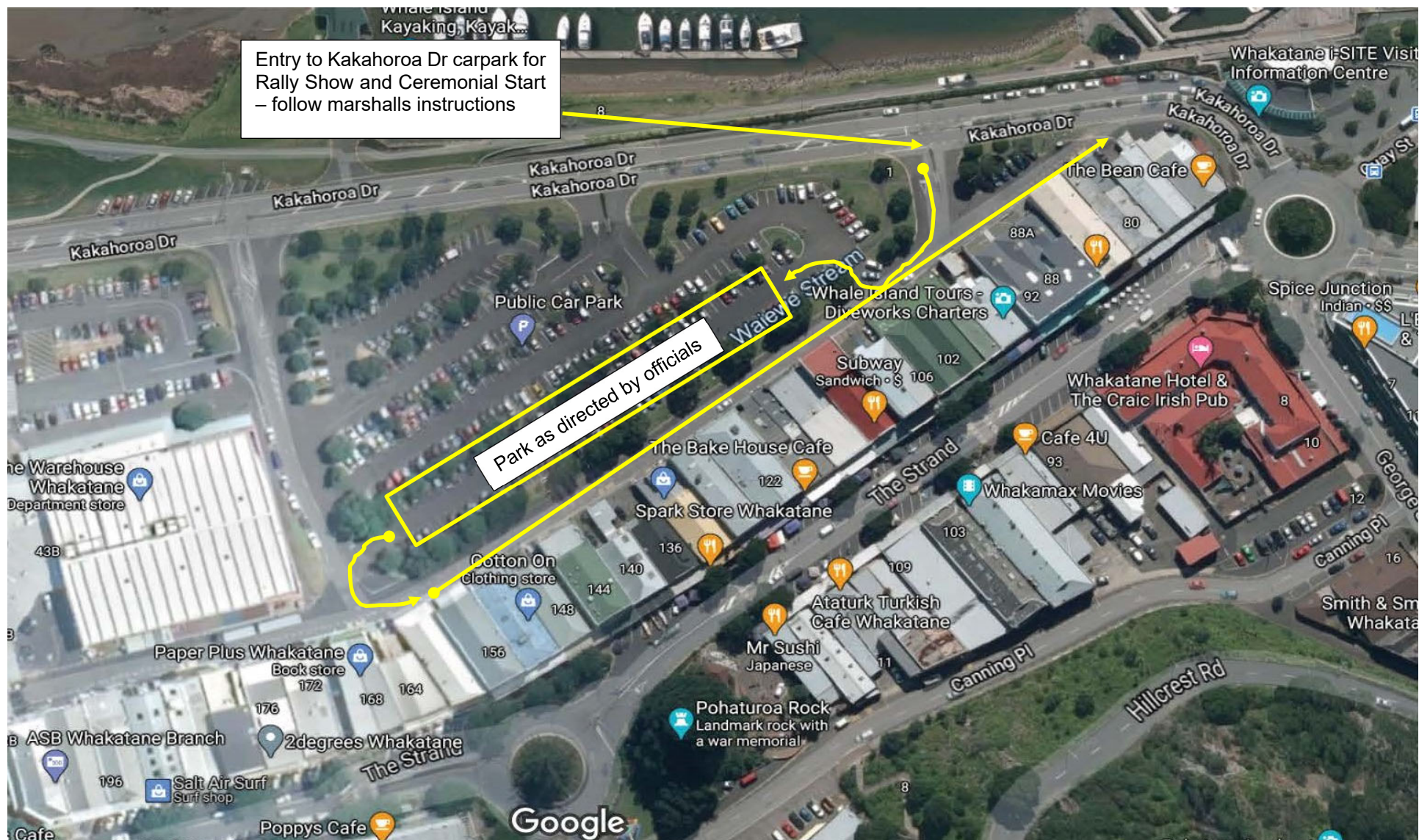
11.8 NZRC and Rally Prizegiving Function - To be at Baypark, Mt Maunganui from 1900.

2023 RALLY BAY OF PLENTY CLUBMANS RALLY

1. Clubmans competitors are required to participate in the Rally Show and Ceremonial start on Saturday 14 October in Whakatane.
2. On Sunday 15 October, Clubmans competitors are to report to Service Park 1 Matata by 0900.
3. After parking and preparing cars Clubmans competitors are to report to the CRO, Bruce McKenzie, who will issue timecards. This will show due report time at SS5 Manawahe 2 and Clubmans will follow the last car in the main field.
4. Clubmans competitors will contest the following stages:

SS 5	Manawahe 2	15.39km
SS 6	Herepuru 2	7.63km
SS 7	Campbell 2	14.36km
Service 2 Pukehina School		
SS 8	Pinnacles	13.32km
SS 9	Taumata	8.05km
SS 10	TMMI (Power Stage)	5.76km
SS 11	Otanewainuku	11.44km
SS 12	Te Puke Quarry	6.35km
Total		82.3km

5. Clubmans competitors to follow the road book in all respects from Service 1.
6. There will be prizes awarded for the successful competitors in this field.

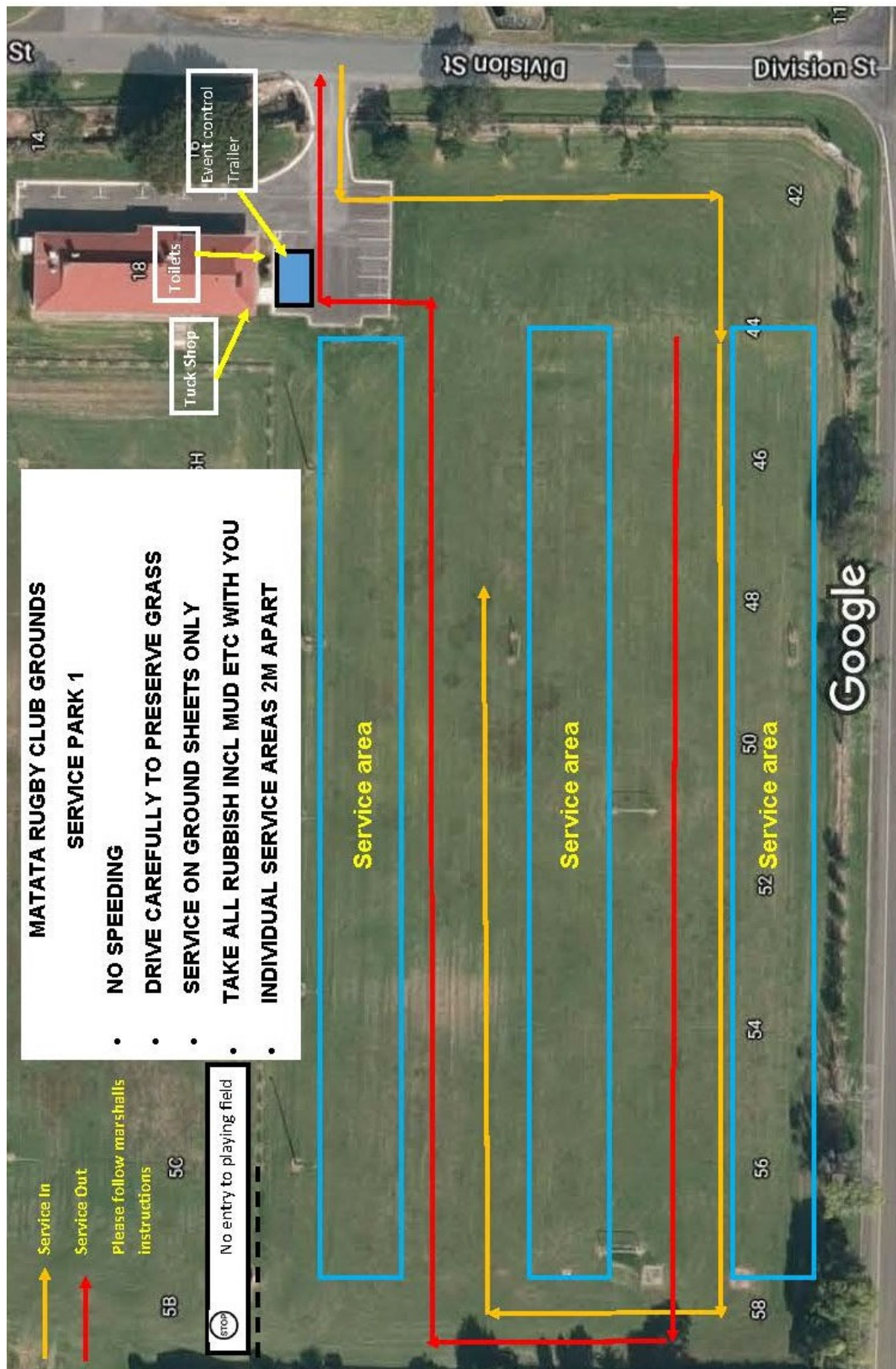


15 October 2023

ITINERARY

TC		SS	Tour	TOTAL	TARGET	1st CAR
	LOCATION	KM	KM	KM	TIME	DUE
	Start Whakatane					5:40
			46.24	46.24	0:50	6:30
SS1	Stanley	8.82				6:35
	Refuel at Awakeri Events Centre		26.91	35.73	0:45	7:20
	Distance to next refuel	(38.28)	(68.83)	(107.11)		
			11.03	11.03		
SS2	Manawahe 1	15.39				7:25
			12.37	27.76	0:35	8:00
SS3	Herepuru 1	7.63				8:05
			19.63	27.26	0:30	8:35
SS4	Campbell 1	14.36				8:40
			22.53	36.89	0:40	9:20
	Service 1 - Matata				0:30	9:50
	Distance to next refuel	(38.28)	(57.80)	(96.08)		
			25.16	25.16	0:25	10:15
SS5	Manawahe 2	15.39				10:20
			12.37	27.76	0:35	10:55
SS6	Herepuru 2	7.63				11:00
			19.63	27.26	0:30	11:30
SS7	Campbell 2	14.36				11:35
			1.44	15.80	0:15	11:50
	Service 2 - Pukehina School				0:30	12:20
	Distance to next refuel	(38.28)	(61.52)	(99.80)		
			27.02	27.02	0:30	12:50
SS8	Pinnacles	13.32				12:55
			28.87	42.19	0:45	13:40
SS9	Taumata	8.05				13:45
	Refuel at TMMI prior to regroup					
	Distance to finish	(24.81)	(46.52)	(71.33)		
	Regroup IN		18.13	26.18	0:30	14:15
	Regroup OUT (SS10 Start Control)				0:10	14:25
SS10	TMMI	5.76				14:30
			5.27	11.03	0:15	14:45
SS11	Otanewainuku	11.44				14:50
			21.86	33.30	0:38	15:28
SS12	Te Puke Quarry	6.35				15:33
			19.61	25.96	0:35	
FINISH	FINISH - Park Ferme In					16:08
	Mt Maunganui Sports Carpark					
	TOTALS	128.50	318.07	446.57		

SERVICE PARK 1 – MATATA RUGBY CLUB GROUNDS



MATATA RUGBY & SPORTS CLUB

BREAKFAST MENU

Full Breakfast \$18.00 (50 available)

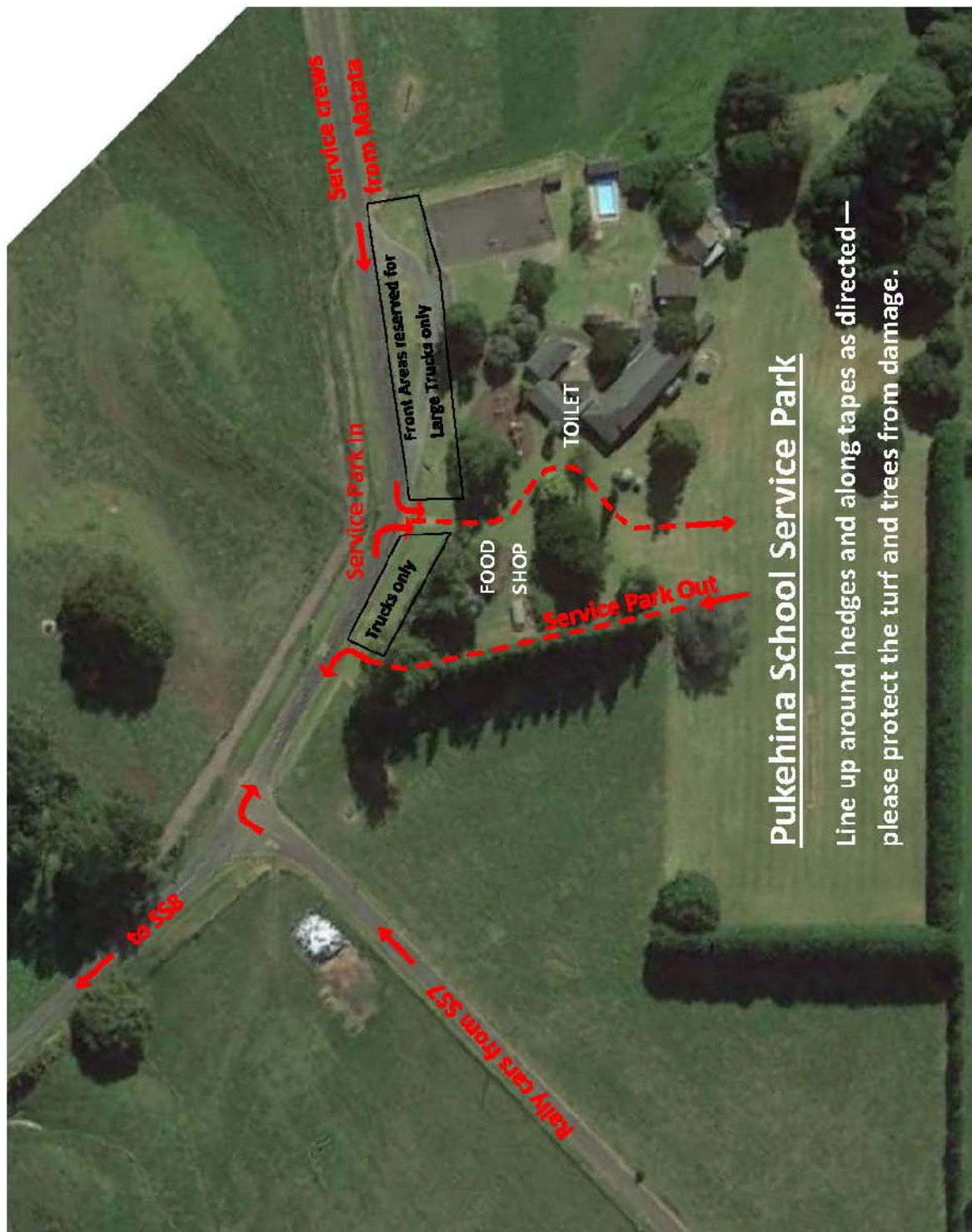
Hash Brown, Mushrooms, Bacon, Scrambled eggs, tomatoes, fry bread
(comes with a complimentary bottle of water or cup of coffee (sachet) or cup of tea)

Breakfast Rolls - \$8.00 (50 available)

Muesli & Yoghurt Pots - \$5.00 (50 available)

Water Bottles - \$2.50

Coffee / Tea - \$2.50



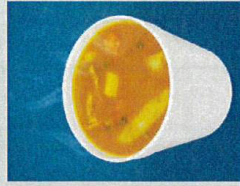


Rally BOP at Pukehina School

1762 Old Coach Road, Pukehina



Sunday 15 October
10am to 3pm



Come & check out the rally cars!
Kai available for purchase!



Please note; cash only

Sausage sizzle \$3.00

Drinks \$1.50

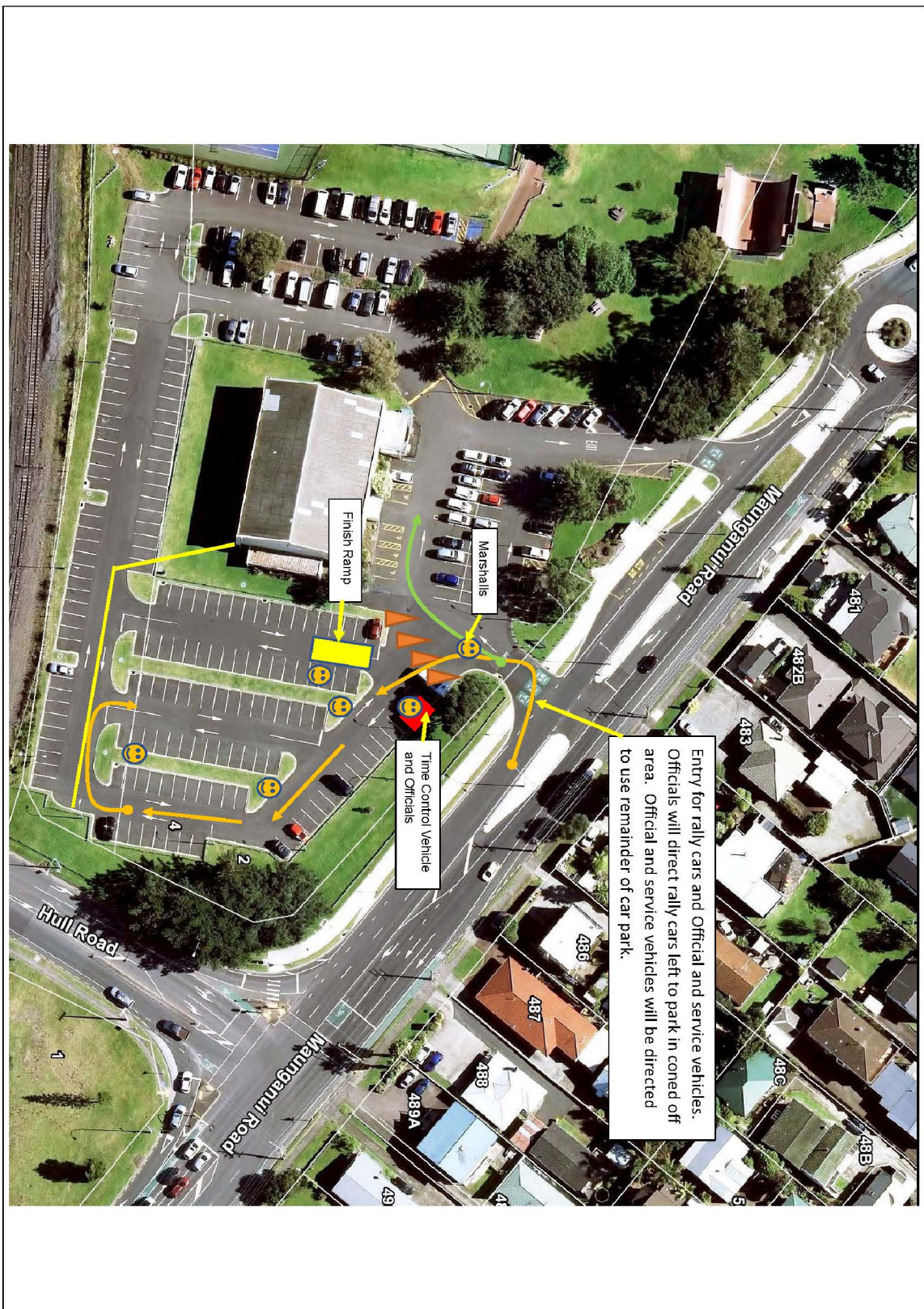
Soup & fried bread \$5.00

Bacon or Steak & egg sandwiches \$10.00



All funds going towards Pukehina School Whanau Fun Day!

FINISH VENUE



FINISH TRAILER PARKING

ADDITIONAL PARKING FOR SERVICE VEHICLES

This is available being the Mt Sports Carpark, access off Hull Rd as shown. Please park large service vehicles here.

Pedestrians can access the carpark, across the railway line as indicated.

PLEASE USE EXTREME CAUTION CROSSING THE RAILWAY

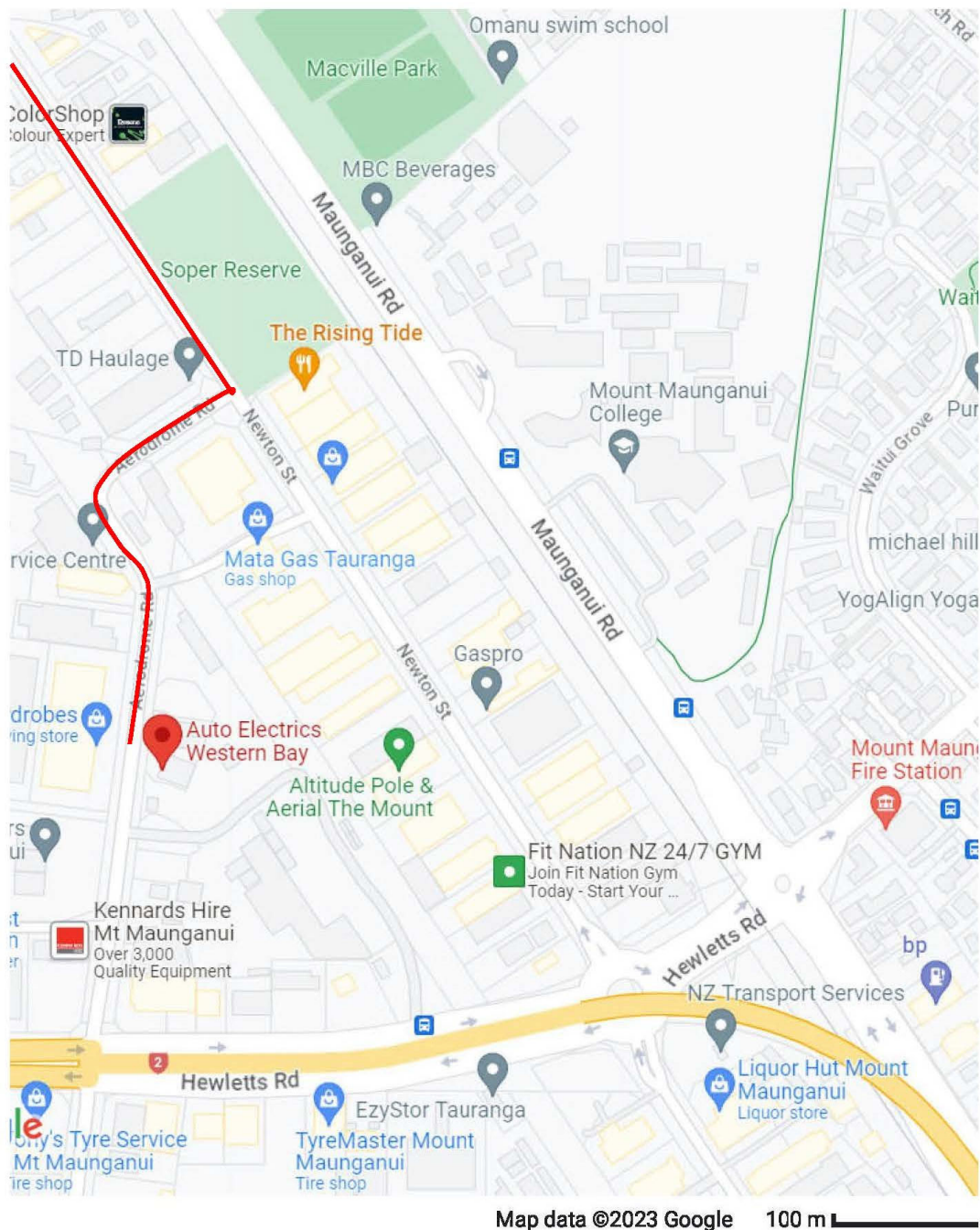


POST EVENT SCRUTINEERING VENUE

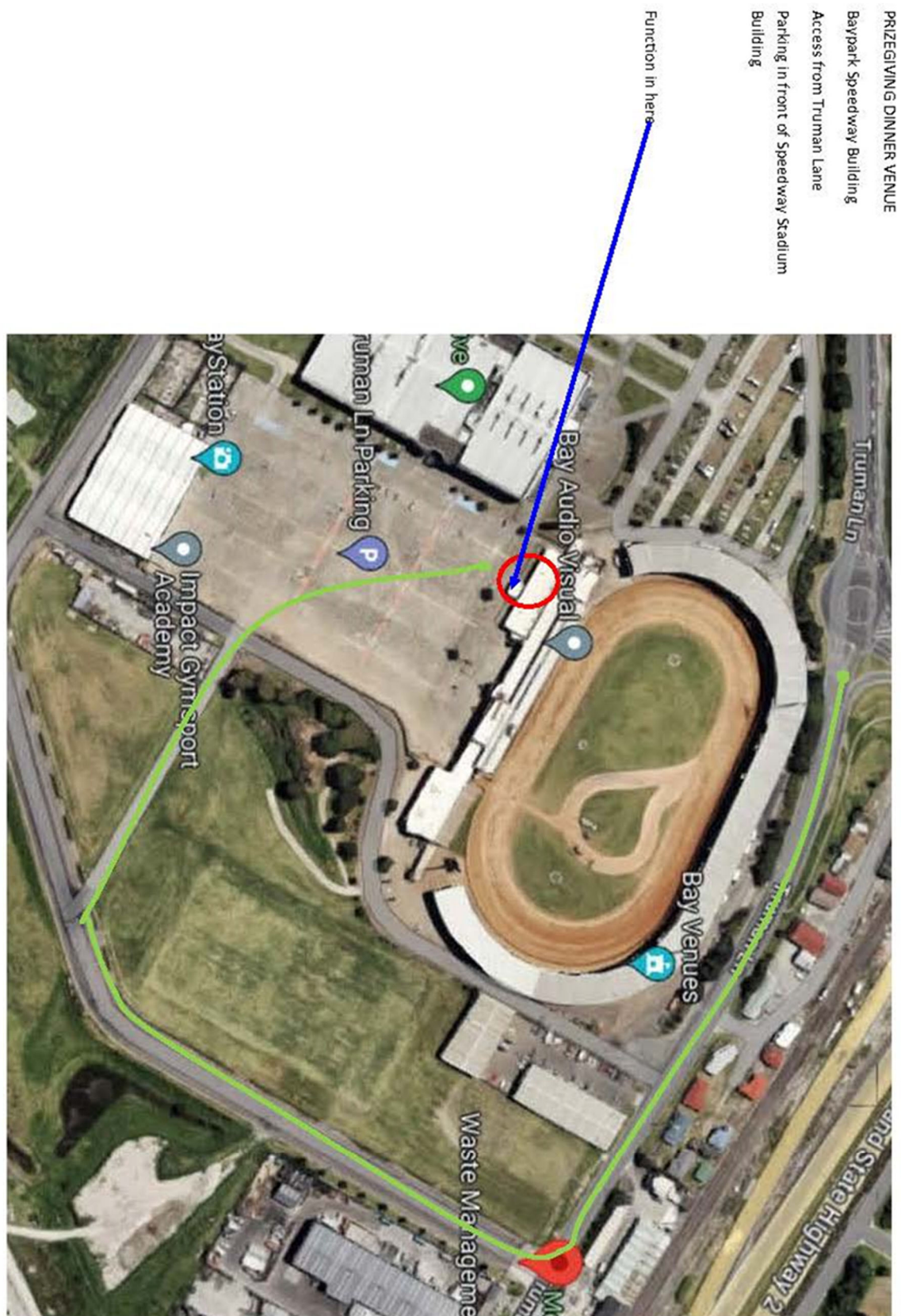
POST EVENT SCRUTINEERING AT AUTO ELECTRICS WESTERN BAY

15 Aerodrome Road, Mt Maunganui

Turn left out of finish area, at the roundabout take the third exit and at the lights turn right into Hull Rd. Then immediately turn left into Newton St. Follow Newton St for 1.05km and turn right into Aerodrome Rd. Follow Aerodrome Rd for 260m to Auto Electrics Western Bay on the left.



PRIZEGIVING VENUE





BATTERY TOWN RALLY BAY OF PLENTY 2023

RECONNAISSANCE TOUR REGULATIONS

1. Motorsport BOP will provide the opportunity for competitors using MSNZ authorised Stage Notes to familiarise themselves with these notes prior to the event.
2. The purpose of the Stage Note Observation "tour" is to enable competitors to make their own comments and amendments to the Stage Notes supplied for that specific event.
3. There will be a single familiarisation pass over the roads to be used for special stages. The tour will be made with all the participants in a controlled "tight" convoy. A cautious pace will be set by the lead Official vehicle.
4. It is vitally important that residents and the general public gain the impression that these tours are conducted in a safe and responsible manner. No rally cars are to be used. Officials and competitors are to use ordinary vehicles with standard exhausts and no Rally tyres. No vehicles with roll cages will be permitted unless approved by the Clerk of the Course. No overtaking will be permitted unless for reason of force majeure (breakdown/puncture etc). The roads will not be closed and are open to other traffic. Expect cars to be coming towards you and keep left at all times.
5. The route, speed and spacing of the convoy is to be controlled by Officials of the event as follows:
 - (i) A minimum of two Official vehicles will be used, one at the front and one at the rear of the tour.
 - (ii) These Official vehicles will be in Radio communication with each other.
6. Competitors wishing to do a Stage Note Observation tour may only do so on this Official Familiarisation tour. Competitors are forbidden to be on Special Stage roads at any other time. (Current MSNZ Manual, Appendix 3, Schedule R Par 1, Art 8).
7. The Tour is to be under the direction of the Clerk of Course; or his authorised assistants. If, in the opinion of any official on the tour; a competitor participating in the tour fails to comply with the rules governing it; that competitor will have his notes removed from him and be directed to leave the tour immediately. The notes will be returned to the competitor back at Rally HQ. The official will report the incident to the Clerk of the Course who will investigate further and may then take the necessary disciplinary action. Refer Current MSNZ Manual, App 1 Sch P. If the same competitor repeat offends at future NZRC events during the year he will be subject to the above and further action as deemed by Motorsport NZ.
8. Any competitor on the tour who is unable to continue for any reason (breakdown, illness) is to surrender his Stage Notes to the convoy official and leave. The notes will be returned to him as soon as possible after conclusion of the tour at Rally HQ. Should the competitor wish to rejoin the Tour at a later stage; at the organiser's discretion, the notes may be returned, and they may rejoin the convoy. The Officials will not retrace any stages that competitor may have missed.



WRITTEN BRIEFING – RECCE RALLY BAY OR PLENTY 2023

Competitors undertaking recce must attend the compulsory briefing at 1900 Friday 13th October, Venue – Tauranga Vintage Car Club rooms, Cliff Rd, Tauranga.

Identification numbers will be distributed at this briefing. All competitors recce cars must have these recce numbers visible at all times.

Start & Finish lines will be identified by **recce signs** and are detailed in the road book. GPS references are also noted in the road book.

Maximum speed limit on special stages is 80kph

Lights on while on stages

All roads (except the forest) are open to the public – **keep left at all times**. The forest road is closed to all traffic except rally traffic; however, this is no guarantee there are not unauthorised vehicles present. Keep left on blind corners.

Please keep the convoy as tight as possible. There will be several official pace cars interspersed through the convoy. Deliberately hanging back will be penalised in accordance with the regulations.

Take Note of CAUTIONS IN THE ROAD BOOK – they are there to help you

Always be courteous to other road users, allow residents, farmers etc out of driveways if possible.

In the event of breakdown or puncture, do not leave the convoy without advising an official.

Any incidents or accidents must be reported to an Official as soon as possible. The incident report sheet at the back of the Road Book must be used.

Under no circumstances are competitors allowed to enter a special stage to conduct reconnaissance unless part of the official convoy.

Please fill up before you start

FUEL – will be available in Te Puke, Edgecumbe and Awakeri on route.

Do not pass the lead car unless instructed to by an official

**If you have any problems during recce stop a recce official or please
phone Andy Adams +64 21 912 848**



BATTERY TOWN RALLY BAY OF PLENTY

RECCE ROUTE and SCHEDULE – SATURDAY 14 OCTOBER

TO REACH RECCE START: Allow 40min from Tauranga.

From Tauranga travel on SH2 (Tauranga Eastern Link Expressway) towards Paengaroa. Follow SH33 through Paengaroa and take first right – Maungarangi Road. Proceed to the stage start at the end of seal.

RECCE START TIME IS 07:00 WITH FIRST CAR DUE IN WHAKATANE AT 14:00

RECCE ROUTE IS : SS8, SS10, SS9, SS11, SS12, SS2/5, SS3/6, SS4/1, SS1

From start follow road book for SS8 from pg45 to page 48 inst 20. Turn right into Whataroa Rd

Turn to page 53 inst 18 and follow road book to page 54 inst 23 and follow road book for SS10 to page 60 inst 22.

Turn to page 49 inst 20 (turning right onto SH36) and follow to inst 23. Follow road book for SS9 to page 53 inst 17 and turn left into Mangatoī Rd.

Follow road book for SS11 (page 62) and SS12 through to page 69 inst 14. Do not take Kairua Rd. Continue on Welcome Bay Rd to the roundabout at the Pacific Coast Highway. Turn right and proceed through Te Puke to rejoin SH2 at the eastern end of the expressway. Follow SH2 towards Matata.

At Matata turn right to stay on SH2 and travel 5km to turn right onto Caverhill Rd then left onto Braemar Rd. Travel 11km to McIvor Rd on the right.

Follow road book from page 20 Inst 1 to recce SS2, 3 and 4, finishing on page 29 inst 20. Do not turn left into Division St.

Continue on SH2 through Edgecumbe to Awakeri, turn right here to stay on SH2 to Taneatua.

Follow road book from page 11 inst 13 to the start of SS1. Recce SS1.

At the junction of Stanley Rd and SH2 turn right to return to Whakatane. 890m after exiting Taneatua, turn right onto Taneatua Rd to return to Whakatane.



RALLY BAY OF PLENTY RECCE SCHEDULE 2023					
STAGE NO	STAGE NAME	SSKM	TOURKM	TIME	START TIME
					07:00:00
SS8	PINNACLES	13		20	07:20:00
			26	30	07:50:00
SS10	TMMI	6		10	08:00:00
			8	15	08:15:00
SS9	TAUMATA	8.5		10	08:25:00
			13	15	08:40:00
SS11	OTANEWAINUKU	11.65		15	08:55:00
Refuel opportunity in Te Puke				15	09:10:00
			22	25	09:35:00
SS12	TE PUKE QUARRY	6.35		10	09:45:00
			90	75	11:00:00
SS2/5	MANAWHAE	15.5		20	11:20:00
			12	15	11:35:00
SS3/6	HEREPURU	7.65		10	11:45:00
			18	25	12:10:00
SS4/7	CAMPBELL	14.75		20	12:30:00
Refuel opportunity in Edgecumbe			90	80	13:40:00
SS1	STANLEY	8.8		15	13:55:00
	Lead Car arrives Whakatane			15	14:10:00
	Convoy approx 30mins long				